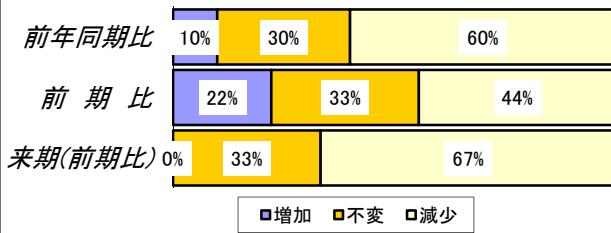


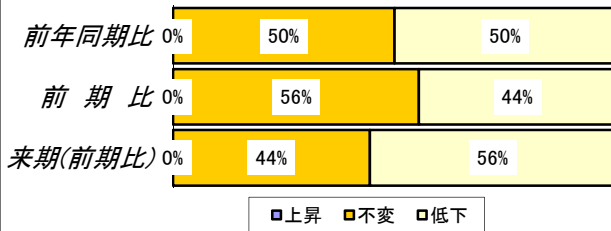
# サービス業 (平成23年度10月~12月期)

調査件数19社、回答件数10社

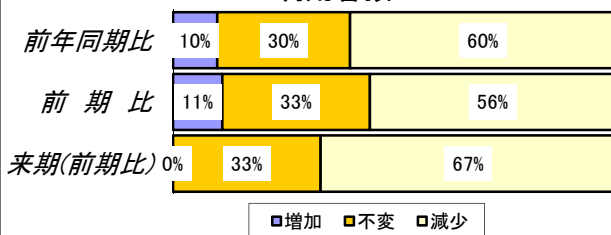
## 売上(収入)額



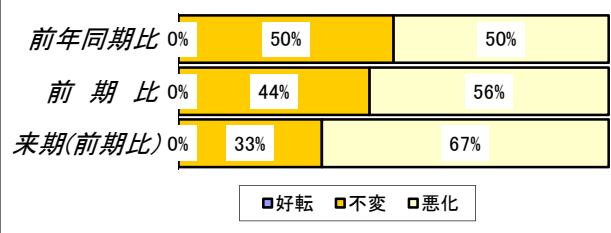
## 客単価



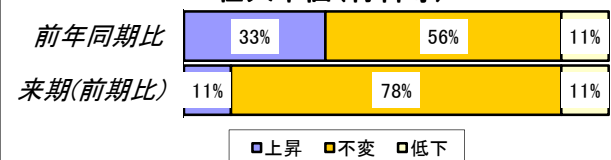
## 利用客数



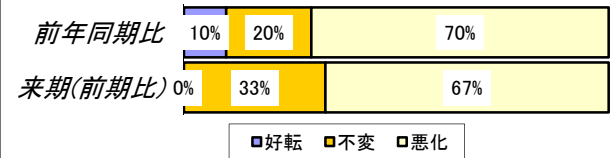
## 資金繰り



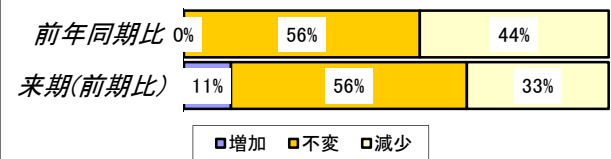
## 仕入単価(材料等)



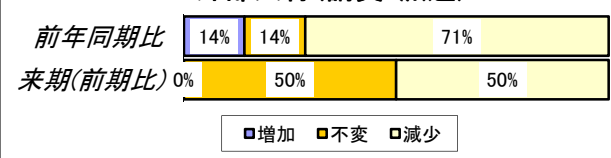
## 採算(経常利益)



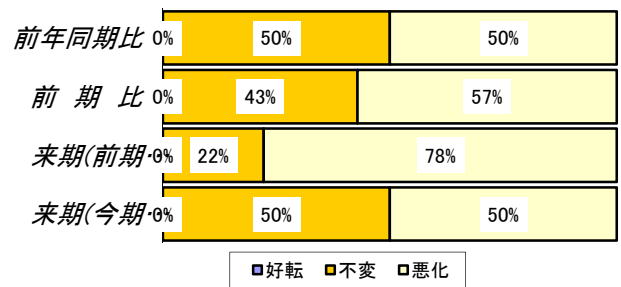
## 従業員(含臨時・パート)



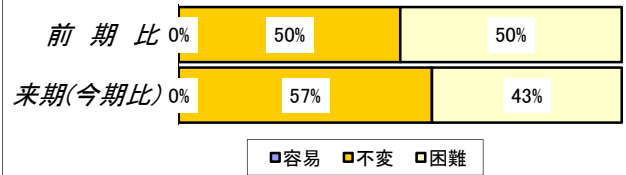
## 外部人材(請負・派遣)



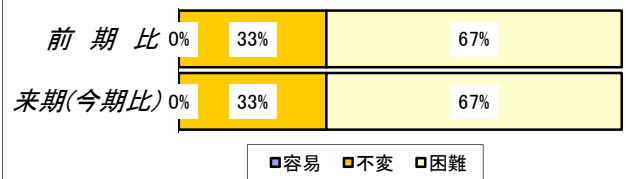
## 業況(自社)



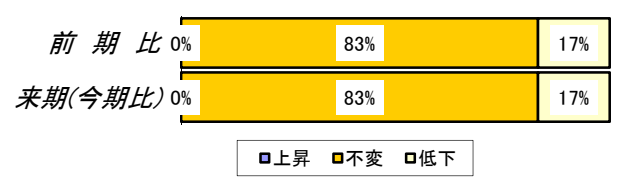
## 長期資金借入難度



## 短期資金借入難度(含手形割引)

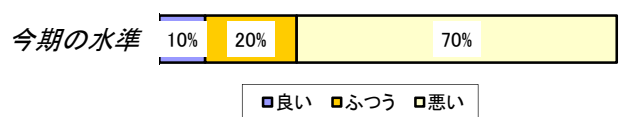


## 借入金利

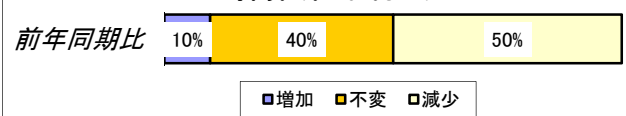


## 今期の業況

### 業況(自社)



### 採算(経常利益)



### 従業員(含臨時・パート)

